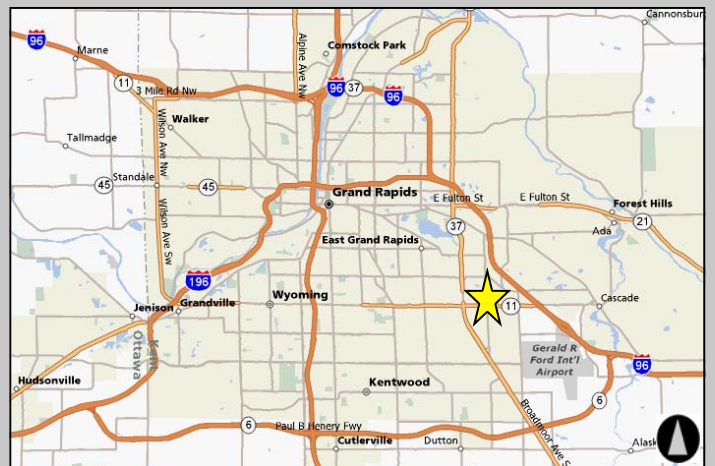
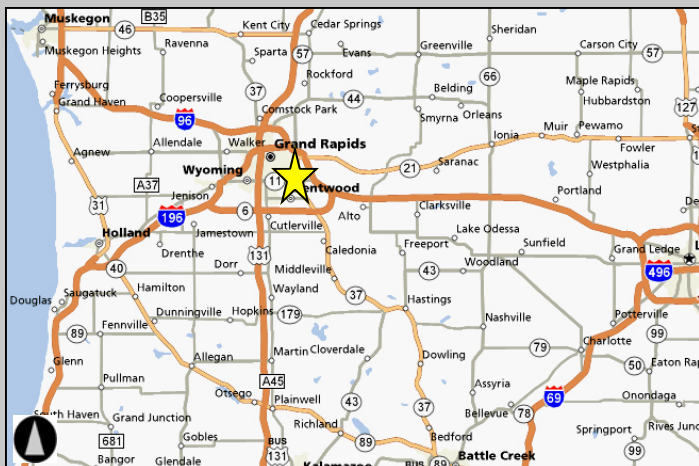


# ROARING 20'S PLAZA

**SUITES AVAILABLE: 1,800 SF - 9,000 SF**

**LEASE RATES: \$11.50 - \$14.00/SF**



## 28th Street, SE Grand Rapids

**JEFF HUNDLEY**

Office: (616) 742-5200

Fax: (616) 742-5207

[jeff@colburnhundley.com](mailto:jeff@colburnhundley.com)



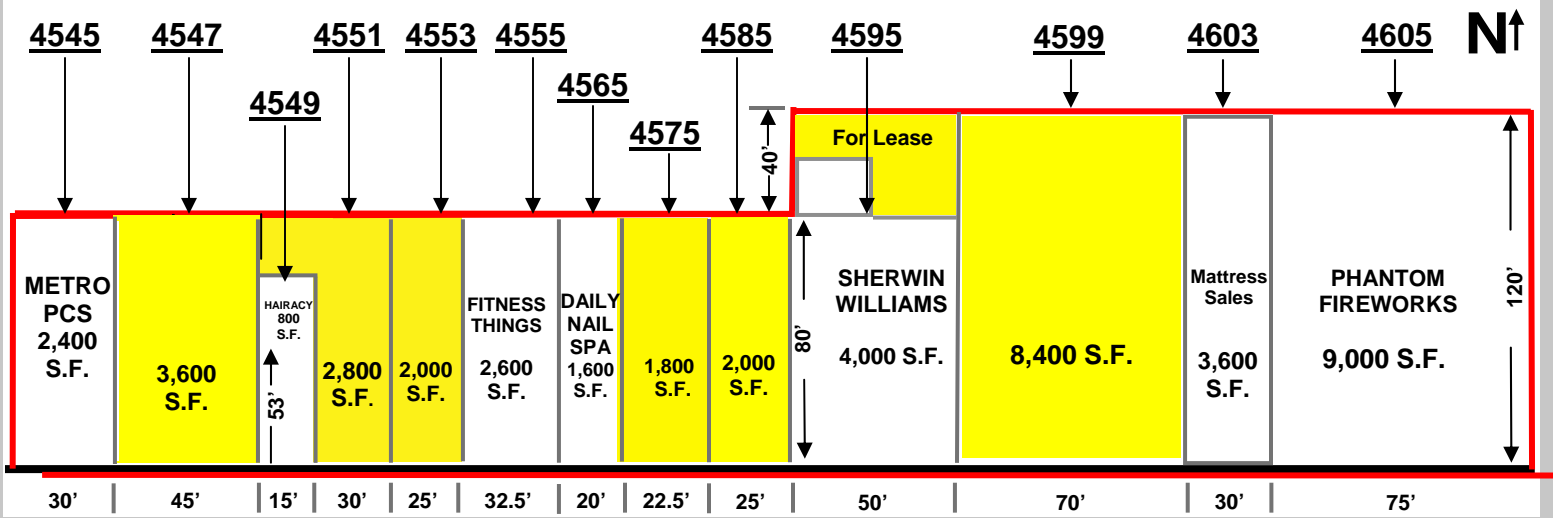
**TODD HENNINK**

Office: (616) 742-5200

Cell: (616) 540-2812

[todd.h@colburnhundley.com](mailto:todd.h@colburnhundley.com)

169 MONROE AVE. N.W. SUITE #300 GRAND RAPIDS, MI 49503



**ROARING 20'S PLAZA SITE PLAN**



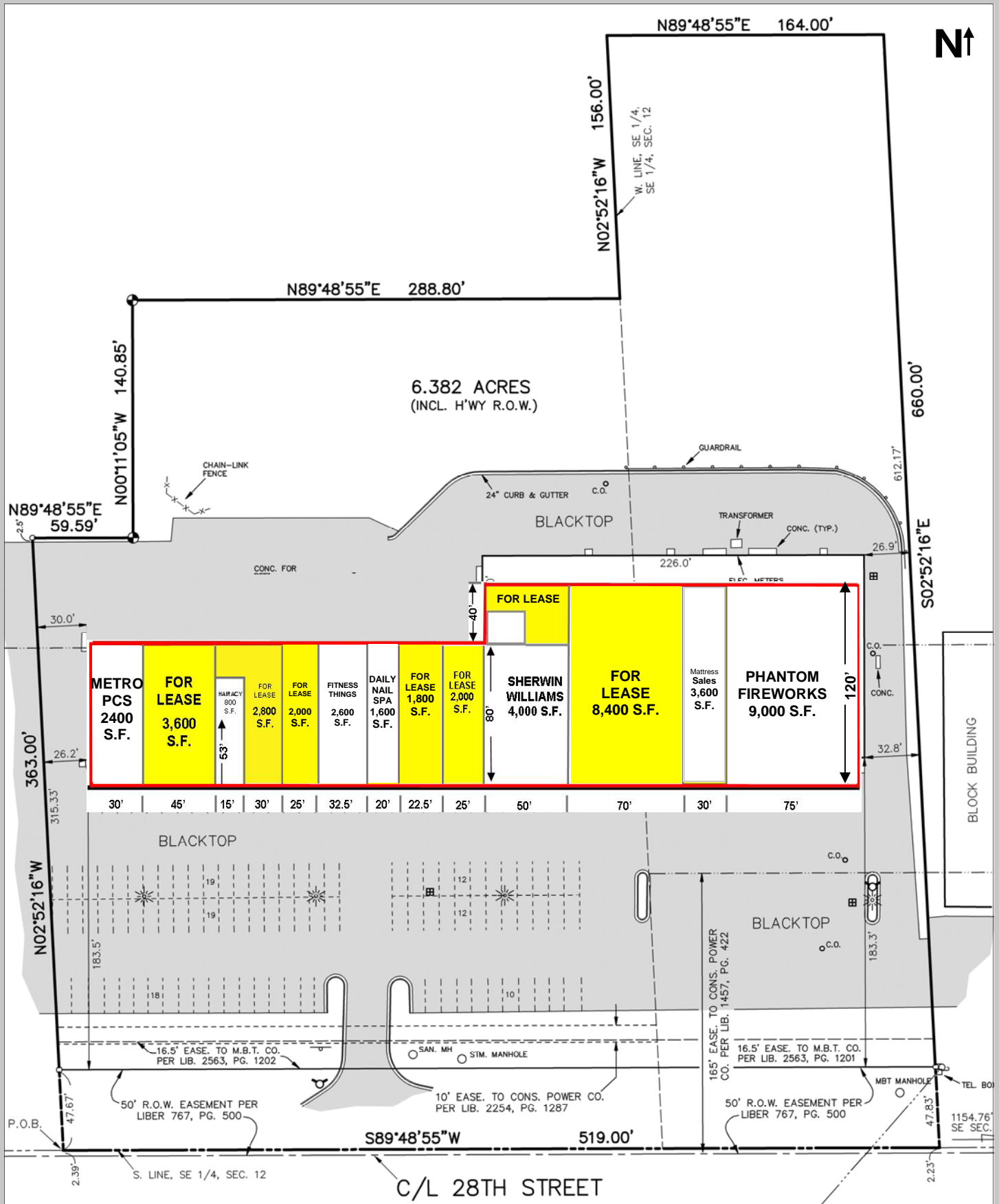
**28th Street, SE Grand Rapids**



169 MONROE AVE. N.W.  
 SUITE #300  
 GRAND RAPIDS, MI 49503  
 Tel: (616) 742-5200

= FOR LEASE

# SITE PLAN ROARING 20'S PLAZA



# AVAILABILITY ROARING 20'S PLAZA



April 2012

## ROARING 20'S

MLS#	SUITE ADDRESS	S.F.	PRICE PSF	MONTHLY RENT
20738	4547	3,600	\$13.00	\$3,900.00
20736	4551	2,800	\$13.00	\$3,033.00
699581	4553	2,000	\$13.00	\$2,167.00
20740	4575	1,800	\$14.00	\$2,100.00
20747	4585	2,000	\$13.00	\$2,166.00
702766	4575 / 4585	3,800	\$13.00	\$4,117.00
20742	4599	8,400	\$11.50	\$8,050.00
702765	4605 <b>LEASED</b>	9,000	\$11.50	\$8,625.00

